



 broch

Bulb Air Planter
Precision at high speed

J.J.Broch, specialists in planting of bulb seeds

Over 20 years of innovation in bulb planting technology

Planting a crop is the first step in a long growing process. Proper seeding is the basis to get a profitable crop.



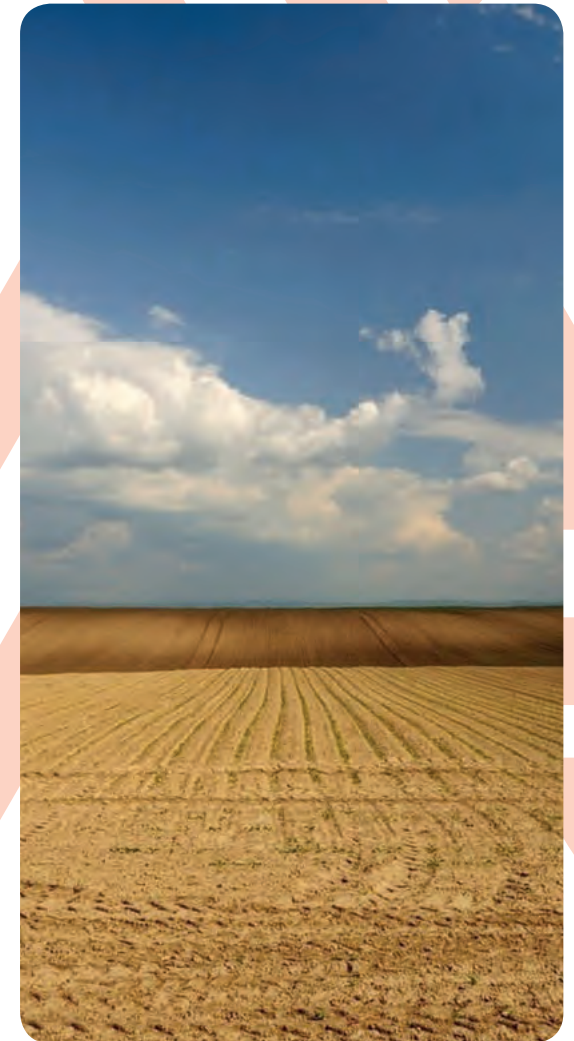
Selection of the best plant material.

Proper size selection and good seeds are key to get expected results.



Preparation of land.

Proper land preparation with required moisture for fast germination are key success factors .



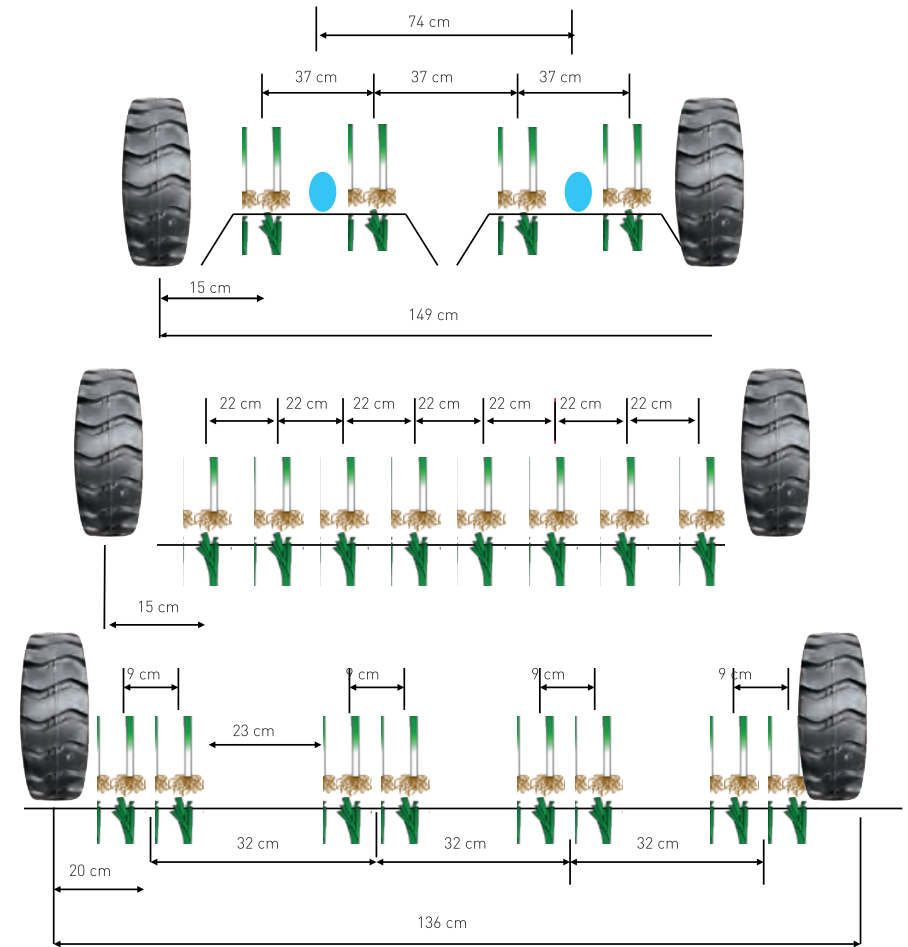
Design made specifically for each farmer

Our long experience and accumulated knowledge in collaboration with farmers in more than 40 countries allows us to offer a solution perfectly fitted to each client.

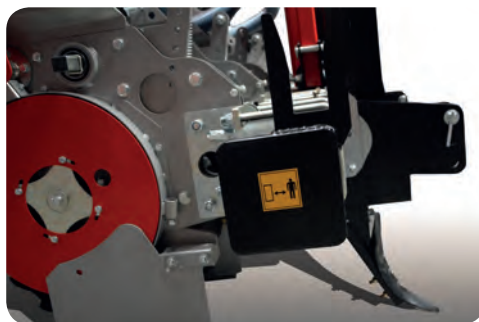


The widest range on the market.

The range of JJ Broch bulb planters fits different settings and planting conditions. Each planter is designed according to the needs of each client.



Details that make the difference

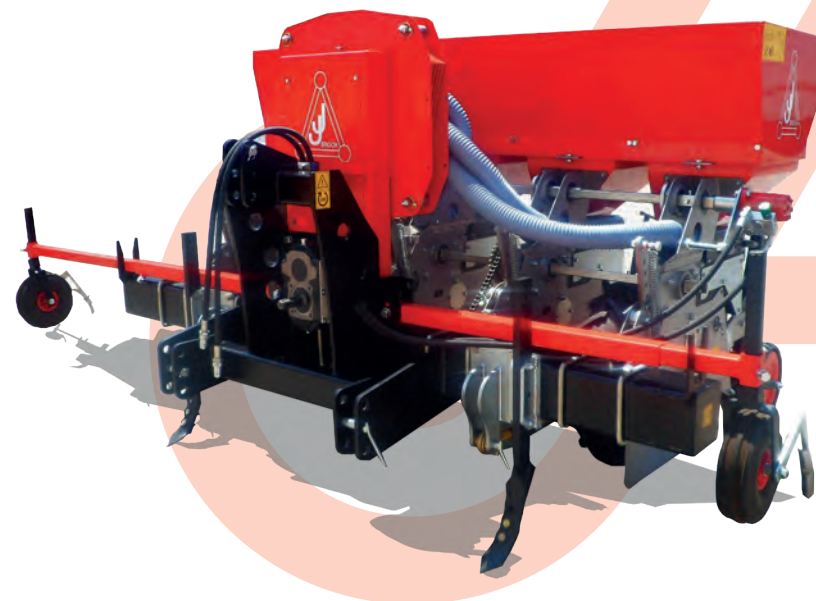


Heavy Duty Construction

Large monoblock chassis, drive shafts and high quality and oversized bearings. All design is focused to support the difficult and demanding work in the field.

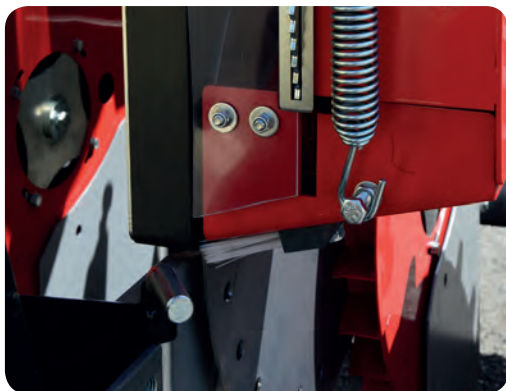
Opening front share

Share adjustable at height prepares a small furrow where bulbs are placed in a row with minimal soilwork and ready for germination.



Multi control of planting depth

The combination of adjustments between opening shares connected to the rear wheels by parallelogram and adjustable drive wheels allows adjust with great precision the planting depth from a few mm to 20 cm.



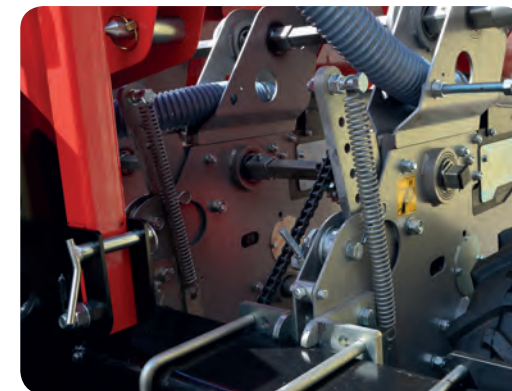
Careful vibration of the hopper

The bottom of the hopper is mobile with careful floating movement makes easy the uptake of bulbs by pneumatic drive disc. Depending on the size, I can adjust the opening of the intake area.



Autonomy and big capacity of the hopper

The resistant design allows to extend the capacity of the hopper and to load big amounts of seeds providing long distances without recharging and increasing the planting capacity.



Easy and fast maintenance

The planter is designed thinking in easy access to maintenance areas and greasing points. The service life of all components is extended without efforts.



Design prepared for high performance



Fast...

Up to **10 Km/h***

* Recommended speed of planting 3-5 km/hour.
Double disc kit and optimal conditions of soil
and work are required for higher speed.



The radial speed of distribution elements is ultra reduced,
thereby keeps precision and perfect distribution even at high
working speed.



Precision PERFECTION

LET'S GO
DESIGN



Combination of pneumatic and mechanical systems.

Bulbs bigger and heavier than other seeds require a combined system of accurate, precise air disc and mechanical distribution. It is the best combination for planting of bulbs

SPECIFICATIONS	PLNA-3	PLNA-4	PLNA-5	PLNA-6	PLNA-7	PLNA-8
Number of rows	3	4	5	6	7	8
Transport width (45 cm)	156	200	244	288	332	376
Hopper capacity aprox. (kg)	500	675	845	1.020	1.195	1.380
Weight (kg)	620	720	820	920	1.020	1.120
Performance (8 hours)	2,5 Ha	3 Ha	4 Ha	4,8 Ha	5,6 Ha	6,5 Ha
Power (HP)	70	80	90	100	110	120



DEALER



Tel. +34 918 711 297
Fax +34 918 711 433
jjbroch@jjbroch.com
sales@jjbroch.com

C/ Vereda del Alquitón, 13
28500 Arganda del Rey
Madrid · SPAIN

www.jjbroch.com